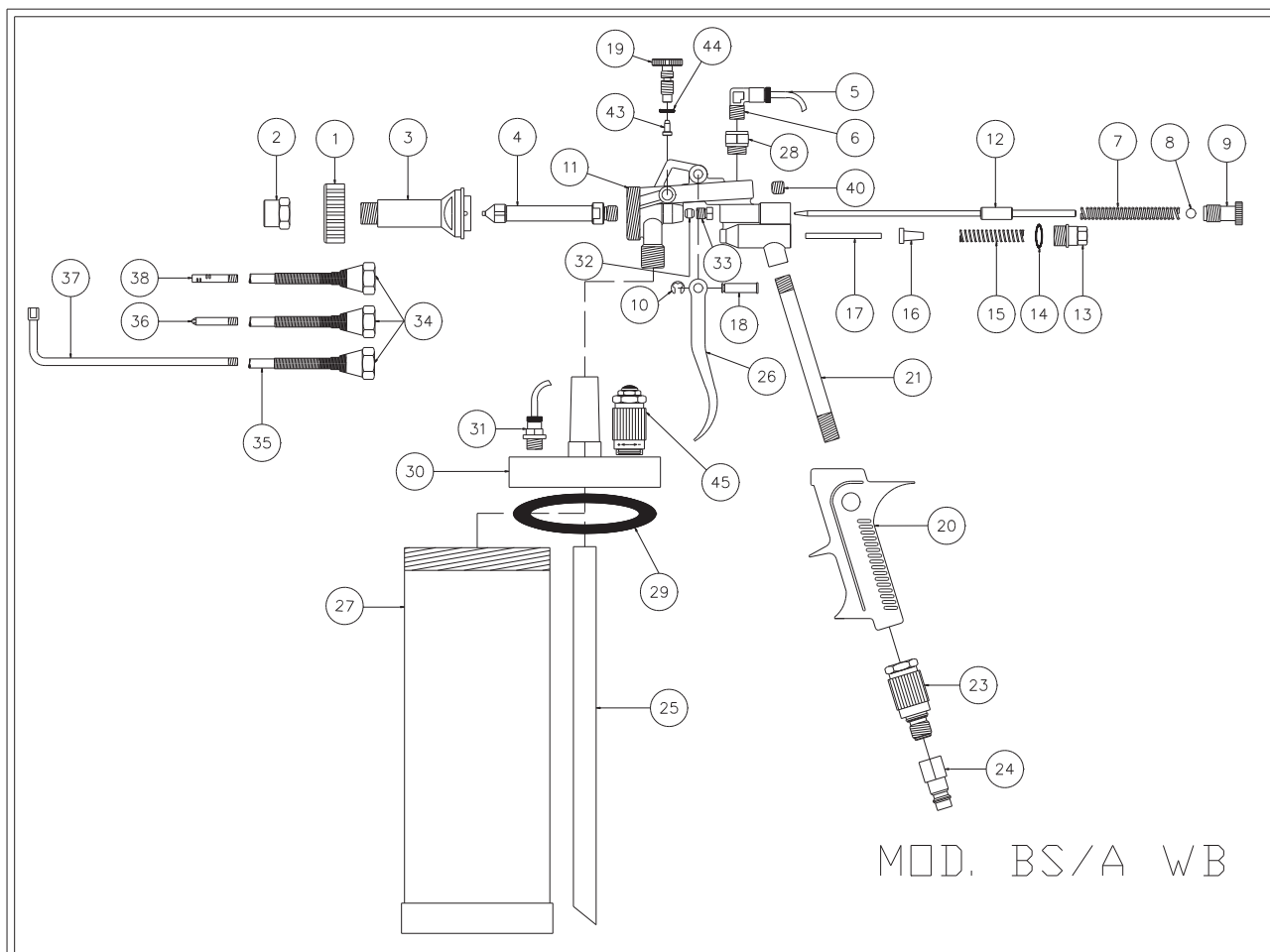


10. MAINTENANCE

- ° Whenever necessary lubricate needle in area before the adjustment nut (BS33).
- ° Check gasket (BS29) on inside of the tank cap, replace if necessary.



DRAWING NUMBER	DESCRIPTION	PRODUCT NUMBER	DRAWING NUMBER	DESCRIPTION	PRODUCT NUMBER
1	RING	BS01	20	HANDGRIP BLACK	BS20
2	SPRAYHEAD CAP	BS02	21	AIR SUPPLY TUBE	BS21
3	SPRAYHEAD	BS03	23	AIR REGULATOR	BS23
4	NOZZLE W/ EXTENSION	BS04	24	AIR HOSE CONNECTOR	BS24
5	AIRLINE	BS05	25	PRODUCT INTAKE TUBE	BS25
6	COUPLING (L-SHAPED)	BS06	26	TRIGGER	BS26
7	SPRING (needle)	BS07	27	TANK (black)	BS27
8	BEARING	BS08	28	BASE NUT (L-shaped coupling)	BS28
9	PRODUCT CONTROL KNOB	BS09	29	GASKET	BS29
10	LOCKING WASHER	BS10	30	TANK CAP (black)	BS30
11	GUN BODY	BS11	31	COUPLING (straight)	BS31
12	NEEDLE	BS12	32	NEEDLE PACKING	BS32
13	STOP SCREW	BS13	33	ADJUSTMENT NUT	BS33
14	GASKET	BS14	34-35	Not Available Separately	
15	SPRING (trigger)	BS15	36	MIST WAND COMPLETE	BS36
16	PACKING	BS16	37	90° SPRAY WAND COMPLETE	BS37
17	SPINDLE (trigger)	BS17	39	UNDERCOATING WAND (not pictured)	BS39
18	TRIGGER PIN	BS18	40	ALLEN SCREW	BS40
19	AIR CONTROL KNOB	BS19	45	AIR REGULATOR (with filter)	BS45