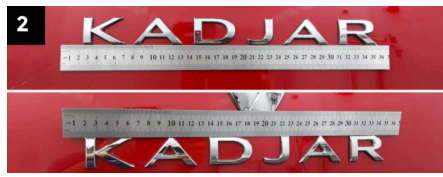




### PHOTOGRAPH THE LOCATION

We will photograph the complete piece with our mobile device to have references of the exact location of the anagrams. We will take the necessary photographs taking all the references we can, whether they are references of the rear lights, specific shapes and folds of the piece itself... everything we can use so that the subsequent location is as accurate as possible.



### CHECK THE SYMMETRIES

With the mobile metric ruler (37cm) we will check the upper and lower symmetry of the letters of the anagram, to choose the symmetry of reference that we will use at the time of taking measures for the upper or lower part, in the case of being symmetrical for a single part we will take that one of reference.



### PHOTOGRAPH THE MEASUREMENTS

With the mobile metric ruler (37cm) we will photograph the measurements of the anagram on the symmetrical part, which we will later use to guarantee the exact position and separation of each letter of the anagram, thus guaranteeing the initial location of the anagram.



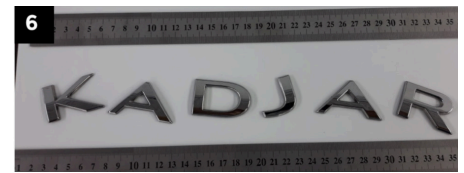
### CUT OUT THE ANAGRAM

We will remove the anagram in a controlled manner, sliding the spatula diagonally in several passes applying sufficient pressure to cut the adhesive, but without it coming off the letters completely, as the aim is to remove the letters with a uniform film of adhesive material that will facilitate its later recovery (if this is not achieved, the anagram can still be recovered).



### MARK THE LOCATION

Based on the photographs in step 1, we can place tapes marking the exact position of the anagram, which will help us to place it correctly. Once this tape has been placed, we can check that the anagram will be horizontally level. If this is not the case, we can rectify the position of the tape until the desired finish is achieved.



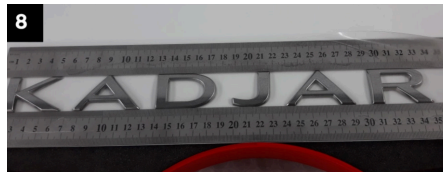
### PLACE THE LETTERS ON THE CONVEYOR

Place the letters on the FAST MIRROR COPY anagram protractor in the order they were initially placed and check that there are no traces of the original adhesive on the outside of the letters. It is recommended to clean the letters before this step for a professional finish.



### SQUARING AND POSITIONING

With the mobile metric (37cm) slide the set of letters downwards until the letters of the anagram are pressed against the fixed metric (43cm) to square the letters of the anagram, then with the letters imprisoned between the two metrics proceed to place the letters by sliding them laterally to the original reference measurements that we have photographed in step 3.



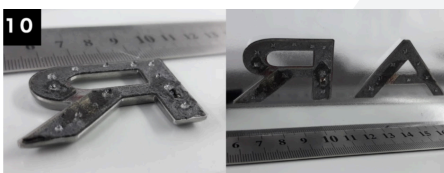
### PLACE THE TRANSPARENT FIXATIVE

Once in the desired position, apply the FAST MIRROR COPY TRANSPARENT FIXER on the lower fixed metric and let it cover the anagram and the mobile metric (37cm), fixing the letters and guaranteeing their position, which will not change. Being careful, the TRANSPARENT FIXER can be used more than once.



### RELEASING THE ANAGRAM

To release the anagram with the TRANSPARENT FIXER, first remove the movable metric (37cm) together with the FIXER and the anagram (PHOTO1), then remove the fixer with the anagram from the movable metric (37cm) (PHOTO2), leaving the anagram correctly positioned in the transparent fixer.



### APPLY THE ADHESIVE

We will apply "SMALL PEARLS" of our adhesive, distributed by each letter, it is NOT necessary a lot of product, on the contrary, it would be harmful, we need "pearls" as small as possible, but with volume because once fixed on the bodywork they spread over the surface of the anagram guaranteeing its gluing. Our specific adhesive does not drip or move vertically so this process would not be feasible with other types of adhesive.



### PLACE THE ANAGRAM IN PLACE

We will place the anagram in its final position, sticking the transparent fixative to the bodywork by its upper and lower part, with which we will achieve that it exerts pressure on the letters and fixes them in their correct position.



### REMOVE THE FIXATIVE AFTER 60s

After 60 seconds we will remove the transparent fixative in a controlled way holding each letter in order not to tear them, as it is the most vulnerable part of the adhesive drying process.