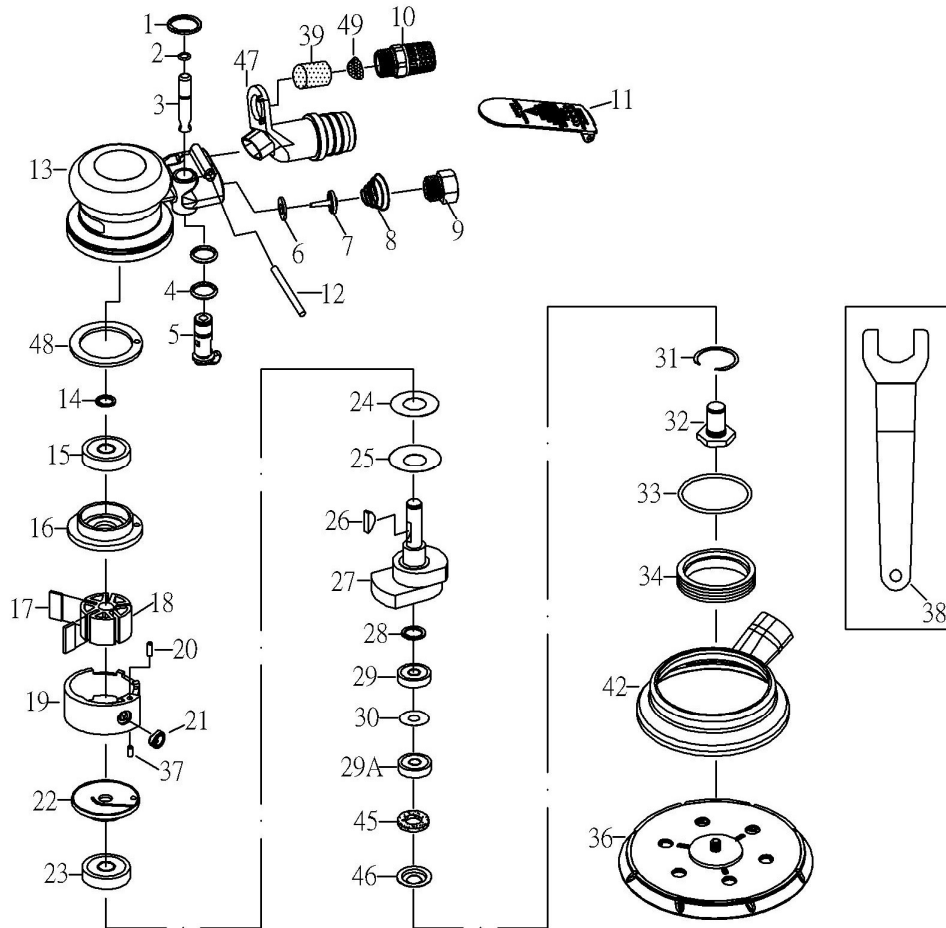


ORBITAL SANDER



NO	PART NO	DESCRIPTION	Q'TY
1	OB-30	SNAP RING (ISTW12)	1
2	OB-04	O-RING (3.5*1.4)	1
3	A-05	VALVE STEM (6*28.5L)	1
4	OB-02	O-RING (P10)	2
5	RS0105	REGULATOR	1
6	OB-06	WASHER	1
7	STOB-08	VALVE	1
8	OB-09-1	SPRING	1
9	70426	AIR INLET	1
10	A-11-X	EXHAUST	1
11	RS0111-5	LEVER	1
12	OB-14	PIN (3*40L)	1
13	RS0113-3	HOUSING	1
14	70410	SNAP RING (STW10)	1
15	70048A	BEARING (6000ZZ)	1
16	STOB-19	REAR PLATE	1
17	OB-20-2	ROTOR BLADE	5
18	STOB-21	ROTOR	1
19	ST246021A	CYLINDER	1
20	ST246014	PIN (3*12L)	1
21	OB86823A	PACKING	1
22	STOB-25	FRONT PLATE	1
23	OB-26A	BEARING (6002ZZ)	1

NO	PART NO	DESCRIPTION	Q'TY
24	OB-28	WASHER	1
25	E-29	WASHER	1
26	ST70407	KEY	1
27	STS560-29	MOTOR SHAFT BALANCER (5MM)	1
	ST25-100-6	MOTOR SHAFT BALANCER (2.5MM)	1
28	OB-30	SNAP RING (ISTW12)	1
29	OB-31.3	BEARING (6001LU)	1
29A	OB-31.4	BEARING (6001)	1
30	OB-23.2A	SHIM	1
31	OB-33	SNAP RING	1
32	S560-34	SHAFT	1
33	ST246034	O-RING (G40)	1
34	RS0134	LOCK NUT	1
36	BTOB-38-6V15Y	PAD HOOK-UP	1
37	81326	PIN (3*8)	1
38	BTOB-39-22	STOP SPANNER (22MM)	1
39	SX-11	SILENCER	1
42	RS0142	SHROUD	1
45	RS0132A	DUSTPROOF WASHER	1
46	RS0133	WASHER	1
47	ST-RS0147	VACUUM ADAPTER	1
48	OB86848-1	RUBBER WASHER	1
49	SX-11.1	STAINLESS MESH	1

WE RESERVE THE RIGHT FOR ANY DESIGNING CHANGES TO THE PARTS AND WITHOUT ANY NOTICE IN ADVANCE.

050150& 050151

2017 05 (1)