

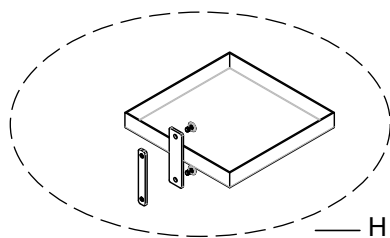
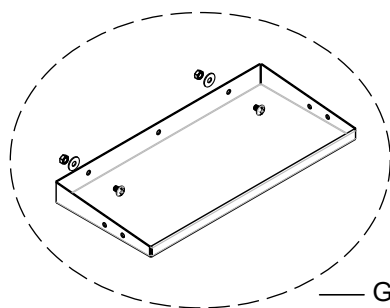
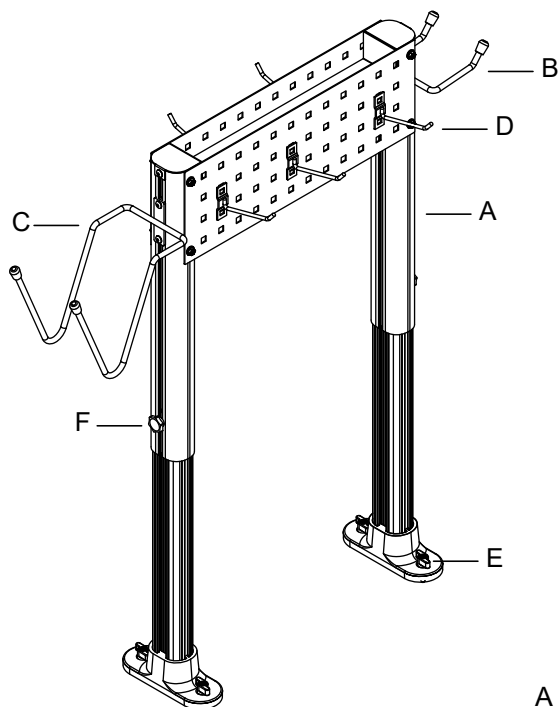
MULTIPURPOSE TOOL RACK SET

Thank you for purchasing our products.

◎For completely understanding the functions of this product and operating it correctly please read this Operation Instruction carefully before using. Please keep this instruction for future reference.

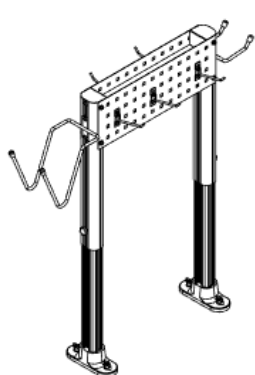
OPERATION INSTRUCTION

Parts Name

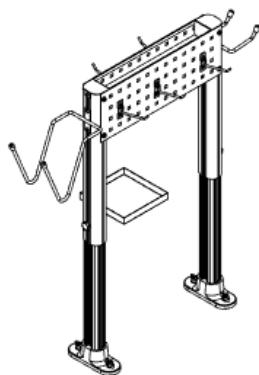


- | | | | |
|---|-------------------|---|--------------------------|
| A | Tool Rack Set | E | Wing Screw |
| B | Multipurpose Hook | F | Star Socket Screw |
| C | Tool hook | G | Compartment Tray (Big) |
| D | Pad Hook | H | Compartment Tray (Small) |

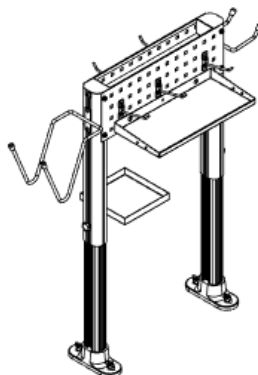
Measurement: 84.2*28.3*50.2~86.8cm



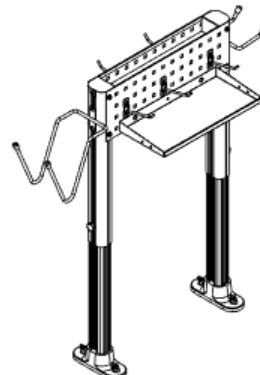
Type 1



Type 2



Type 3



Type 4

Model	Name	Measurement	Weight
Type1	Multipurpose Tool Rack Set	545*235*590(mm)	7.03 kgs
Type2	Multipurpose Tool Rack Set/Tray (Small)	545*235*590(mm)	7.50 kgs
Type3	Multipurpose Tool Rack Set/Tray (Small+Big)	545*235*590(mm)	8.32 kgs
Type4	Multipurpose Tool Rack Set/Tray (Big)	545*235*590(mm)	7.85 kgs

Operating Instructions

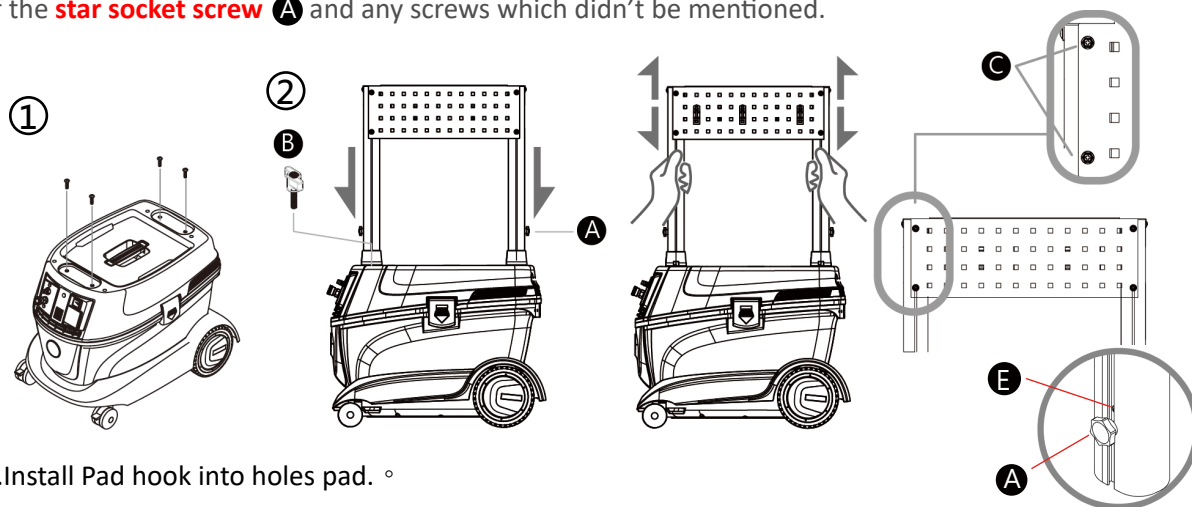
TOOL RACK SET INSTALLATION:

1. Unscrew four screws on the host head with $\varnothing 5.0\text{mm}$ Phillips screwdriver.
2. Put the tool rack set in the notches of top of hose head and screw four **wing screws** **A** into the seats of rack for both sides. Put down the outside rack posts in the lowest position. Screw the **star socket screws** **A** in the rack posts for both sides, this procedure can be sure the unit is level. Loosen the **star socket screws** **B** slightly for both sides, and hold the rack posts for both sides by hands to check if the rack can be moved up and down smoothly.

ATTENTIONS:

While adjustment, if the rack cannot be moved up and down smoothly, please loosen eight **Hexagon Phillips screws** **C** on the holes plate slightly. When the rack posts can be moved smoothly, tighten the eight **Hexagon Phillips screws** **C** on the holes plate.

To prevent any situations about failure installation, please don't unscrew the round **head screw** **E** of the **star socket screw** **A** and any screws which didn't be mentioned.



3. Install Pad hook into holes pad. °

4. Tool Hook, Multipurpose Hook and Compartment Tray(Small) installation:

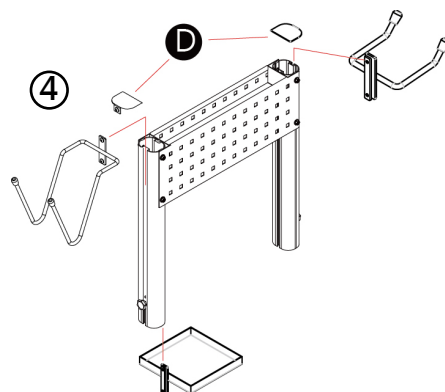
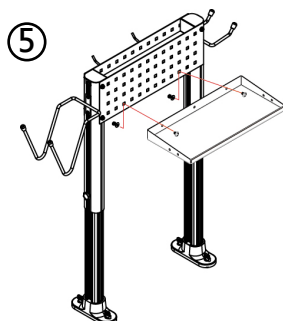
Please screw the hook kit tightly after sliding the fixed piece into a rail of post to fix the position. While adjust the position, please loosen the screw slightly.

For example:

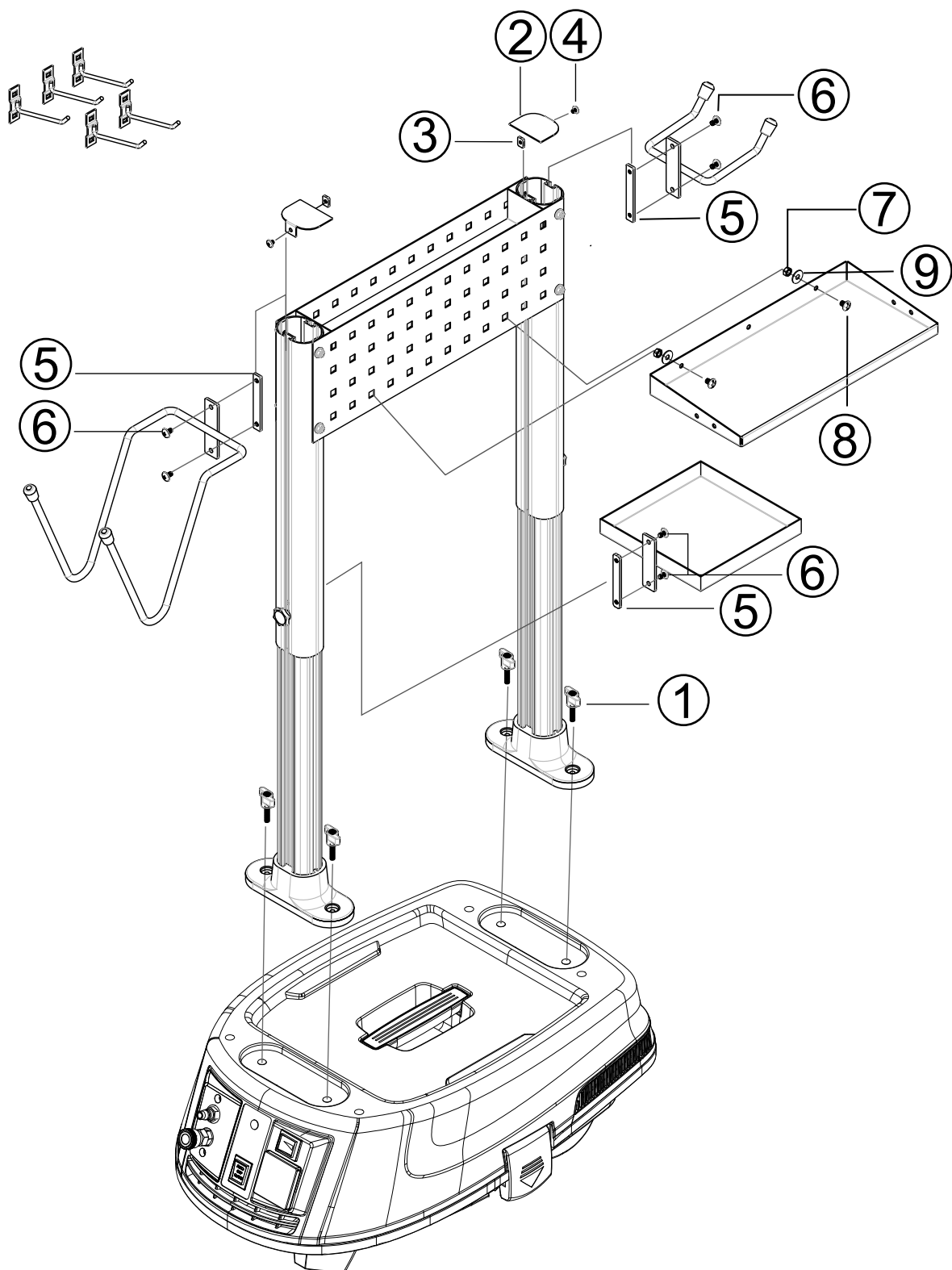
Loosen the screw on the tool rack cover with Phillips screwdriver slightly, remove **tool rack cover kit (screw and fixed piece included)** **D**. Then slide the fixed piece of tool hook kit into a rail of rack post. After the position is fixed, screw it tightly and screw the **tool rack cover kit** **D** back then finish.

5. Compartment Tray (Big) installation:

Insert screws into Compartment Tray (Big) and holes pad, put on Washer and Nut, and then screw tightly with Phillips screwdriver and wrench.



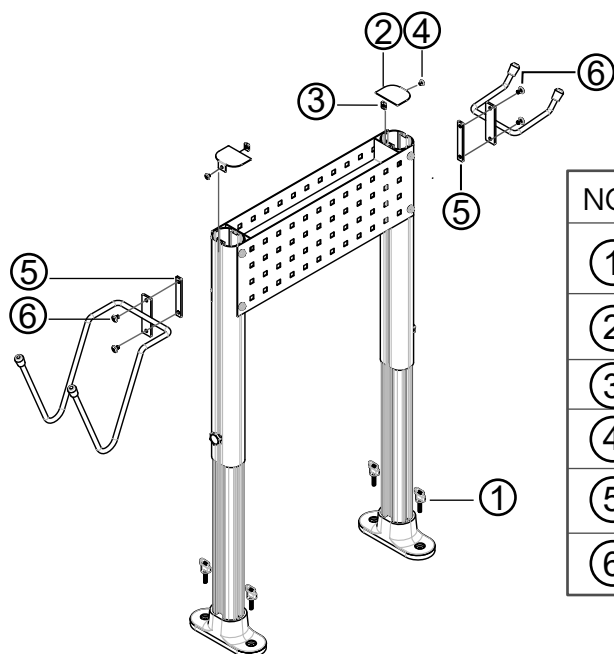
Assembly Drawing





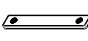



※Compartment Tray(Small) could be assembled on aluminium tube's sides , more useful.
 ※Bearable weight of tray is under 3kgs

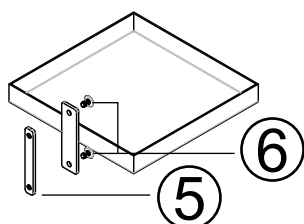
Screw of each part instructions

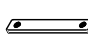

1 MULTIPURPOSE TOOL RACK SET



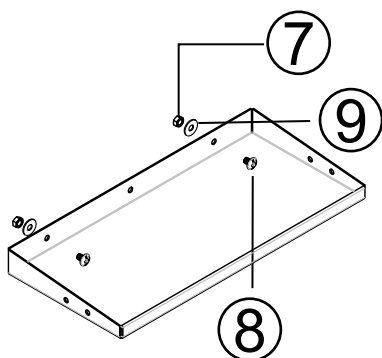
NO.	Specification	Name	Amount
①		Star Socket Screws	4
②		Tool Rack Cover	2
③		Fixed Piece	2
④		Screw M5*6	2
⑤		Fixed Piece	2
⑥		Screw M5*8	4




2 COMPARTMENT TRAY (SMALL)



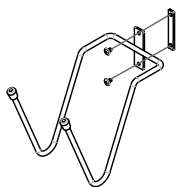
NO.	Specification	Name	Amount
⑤		Fixed Piece	1
⑥		Screw M5*8	2

3 COMPARTMENT TRAY (BIG)

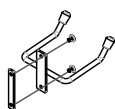


NO.	Specification	Name	Amount
⑦		Nut 1/4	2
⑧		SCREW 1/4*3/8	2
⑨		Washer 6*16*1.0	2

Option



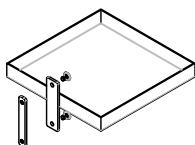
● Hose Hook



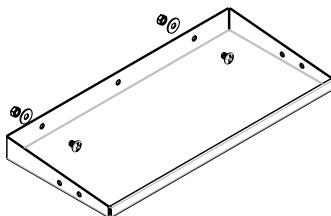
● Multipurpose Hook



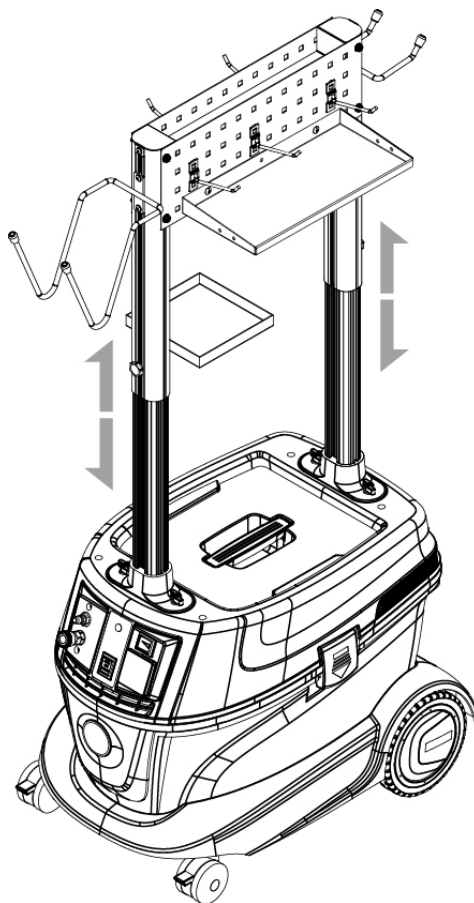
● Tool hook



● Compartment Tray (Big)



● Compartment Tray (Small)



Product Warranty:

1. This product comes with a one- year full warranty from the date of purchase with the normall using.
2. The range of warranty is covered the unit and parts, but consumable items are not covered by this warranty.
3. It has to be charged during the guarantee period under the situations as below:
 - a. Incorrect using or any unit that has been modified in any way causes the failure or damages.
 - b. Failure caused by accident drop or falling clean in moving.
 - c. During the guarantee period, if repair can't be done because of the parts are stop for production or modified for better replacement; we may charge the price difference of better replacement.
 - d. The natural disaster, social effects of pollution and incorrect voltage cause the failure or damages.
4. If lose this warranty, don't reissue again.
5. We reserve right to change products and specification at any time without prior notice.

Warranty

Product name:

Data of the Supplier: ____ (yyyy) ____ (mm) ____ (dd)

(This product comes with a one- year full warranty from the date of purchase with the normal using.)

Name:

Address :

Stamp of the store :